

Sawyer Bay Race
June 15, 2019
Thunder Bay Yacht Club
Thunder Bay, Ontario

SAILING INSTRUCTIONS

1 RULES

- 1.1 The series will be governed by the rules as defined in *The Racing Rules of Sailing*.
- 1.2 Each boat shall comply with all Transport Canada and other applicable laws, rules, and regulations.

2 NOTICES TO COMPETITORS AND CHANGES TO SAILING INSTRUCTIONS

Official notices, including changes to the sailing instructions will be posted on the Thunder Bay Yacht Club (TBYC) website (www.tbyc.on.ca) no later than 8 PM on the day before the notices take effect.

3 SCHEDULE (June 15, 2019)

- 3.1. 11:00 AM, competitors' meeting on the water in Sawyer Bay. The SM may be conducted on VHF radio. Monitor VHF channel 72 at 10:50 AM for specific instructions.
- 3.2. 11:55 AM, warning signal; noon start

4 THE COURSE

- 4.1 The race committee will select Option A or B at the skippers' meeting.
- 4.2 Option A (see Appendix A). The course will be:
 - Cross the start line in a westerly direction,
 - Leave Hare Island buoy (A2) to starboard,
 - Through the Main Gap leaving Main Gap Light to starboard,
 - Finish near the end of Pier 1.
 - Course length is 18.9 nm.
- 4.3 Option B (see Appendix B). The course will be:
 - Cross the start line in a westerly direction,
 - Leave Papoose Island to port,
 - Through the Main Gap leaving the Main Gap Light to starboard,
 - Finish near the end of Pier 1.
 - Course length is 17.7 nm.

5 THE START

- 5.1 All divisions will start together.
- 5.2 A horn will be sounded to make warning, preparatory, one minute, and start signals, but the race shall start at 12:00 PM by GPS time even if sound signals are advanced, delayed, or absent. This changes RRS 26.

5.3 The start line will be set in Sawyer Bay using local landmarks, buoys, mooring balls, or anchored boats. Specific instructions will be provided at the competitors' skippers' meeting.

6 RECALLS

There will be no recalls. If any part of a boat's hull, crew or equipment is on the course side of the start line at the start time, she shall sail completely to the pre-start side of the start line before starting, and will be subject to protest by other competitors under RRS 28 if she does not do so. This changes RRS 29.

7 THE FINISH

7.1 The port end of the finish line will be between an inflatable orange tetrahedron off the end of Pier 1. The starboard end of the finish line will be the 21 m high vertical steel sculpture at the end of Pier 1.

7.2 If the inflatable mark is missing, the finish line will be a line extended from the starboard end of the line on a bearing of 090°, to a point 30 m from shore.

7.2 The first boat to finish shall record her GPS finishing time, remain on station for one hour, and record the GPS finishing times of all boats that finish during that time. Finishing times shall be reported to the Fleet Captain at the first reasonable opportunity.

7.3 If the first boat to finish is no longer on station, a boat that finishes shall record her GPS finishing time, and the finishing times of the boats that finish immediately before and/or after her. Finishing times shall be reported to the Fleet Captain at the first reasonable opportunity.

8 PROTESTS AND REQUESTS FOR REDRESS

8.1 A boat intending to protest shall **notify** the race committee of the name(s) of the boat(s) being protested and the boat protesting before leaving the racing area. The protest committee shall waive this requirement if there is good reason to do so.

8.2 A protest shall be **made** in writing, according to RRS 61.2, and delivered to the Fleet Captain no later than two hours after the last boat (any division) finishes the race. The protest committee shall extend the time limit if there is good reason to do so. Electronic delivery of a written protest by text, email, etc., is acceptable.

8.3 Protests will be heard by a protest committee of three or more people. The protest committee chair will be a full or racing member of TBYC or Temple Reef Sailing Club (TRSC), and will be appointed by the Fleet Captain. Other committee members will be members of TBYC or TRSC, and will be appointed by the Fleet Captain or protest committee chair.

9 SAFETY REGULATIONS

A boat that retires from a race shall notify the race committee and other boats as soon as possible.

10 CREW LIMIT

10.1 A boat's crew shall be limited to the number of crew permitted by the LMPHRF rating for its design, or the number assigned by the TBYC Ratings Committee. A boat's crew limit may be exceeded provided it notifies the race committee before leaving the dock.

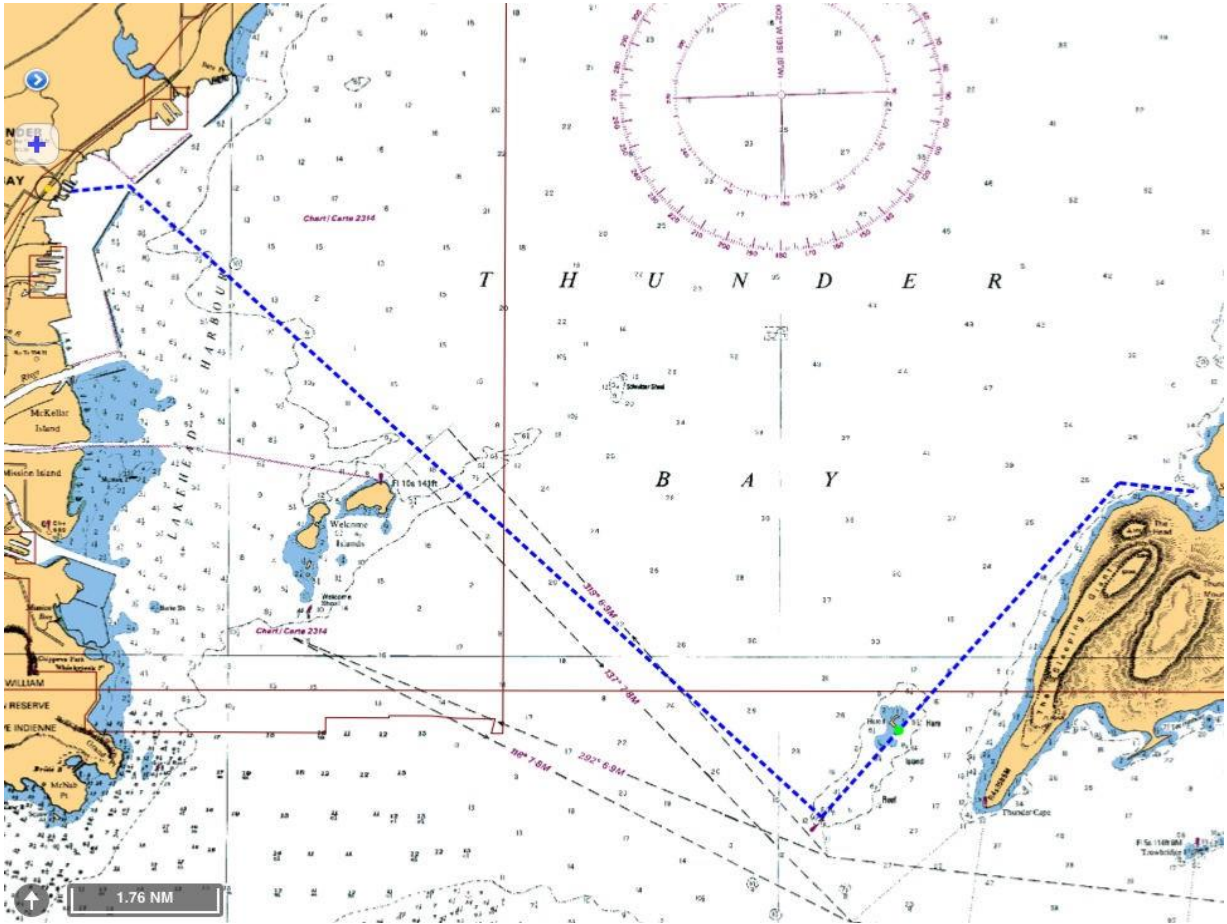
10.2 A boat may elect to relieve another boat of her excess crew. If no boat elects to do so, the overlimit boat is deemed to comply with its crew limit.

13 RADIO COMMUNICATION

Except in an emergency, a boat that is racing shall not make voice or data transmissions and shall not receive voice or data communication that is not available to all boats.

APPENDIX A

Course Option A: via Hare Island buoy (A2)



APPENDIX B
Course Option A: via Papeose Island

